

CASE STUDY



PROJECT

ROSETTA ROAD, SPIXWORTH, NORWICH

Demolition of existing dwelling and construction of re-placement four-bedroom chalet bungalow with external works

CLIENT

AKEC Property Developments Ltd

SERVICES

Architecture from feasibility study to completion

Currently under construction, completion due Winter 2017

The site contained a two/three-bedroom bungalow in poor condition. Over the years various changes and additions had been made to the property which resulted in a poor layout and it not being easy to move around. The site also had a large rear garden which wasn't utilised.

Fusion 13 initially worked with the developer to see if internal changes could be made to improve the existing dwelling. However, we came to the conclusion that the best option was to demolish the existing bungalow and replace it with a larger family dwelling, fit for modern lifestyles.

The new chalet bungalow includes an open plan kitchen/dining room, separate lounge, en-suite bathrooms and large amounts of glazing to maximise natural daylight and allow views over the large garden.

The scheme achieved full planning and is currently under construction. The project has been cost effective for the developer and has offered a good-value, spacious family property for a potential buyer within a popular residential area.

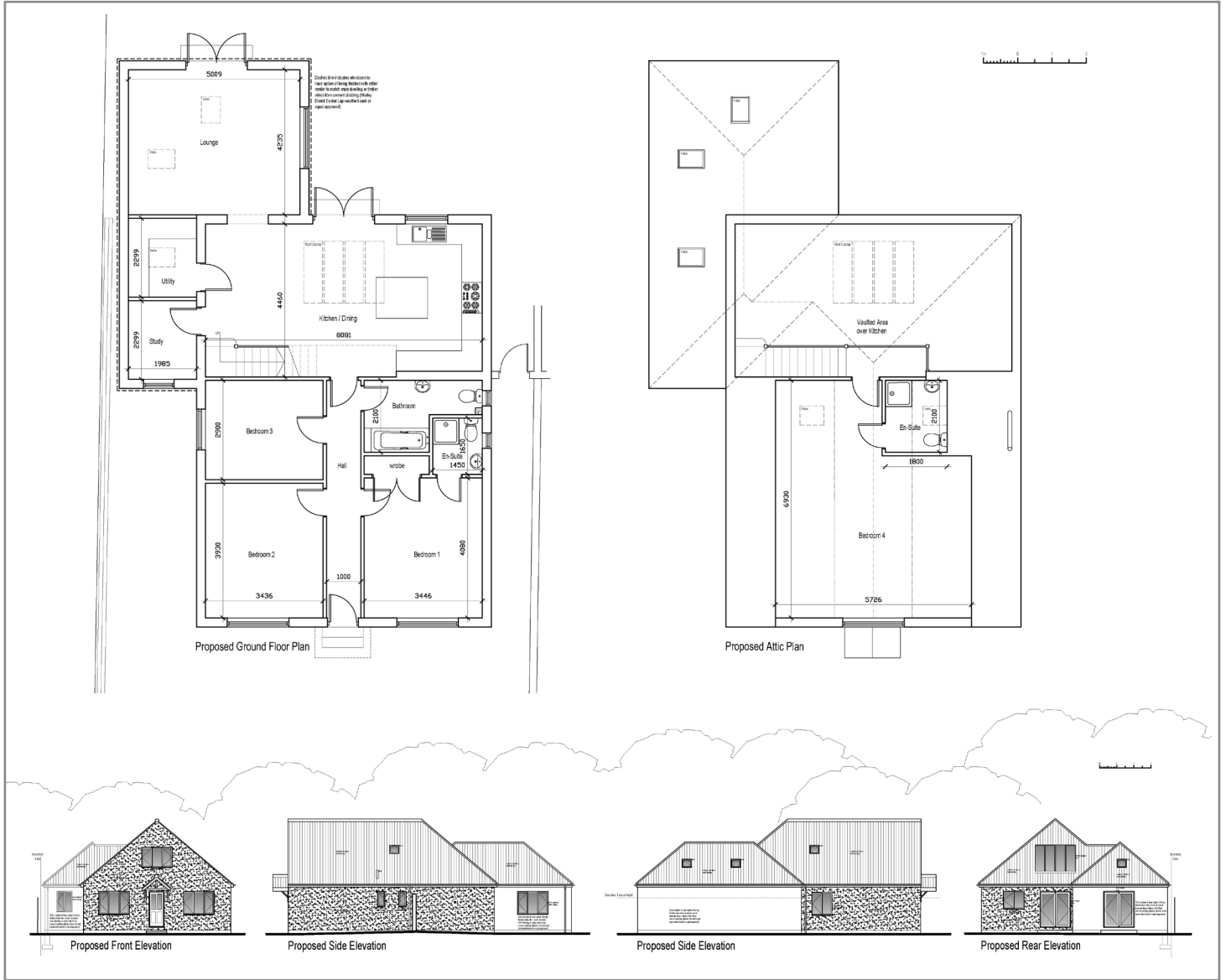
+44(0)3333 443013
info@fusion-13.co.uk
www.fusion-13.co.uk

Fusion 13

Architectural & Planning Services

Architectural & Planning Services

CASE STUDY



Overleaf:
CGI Photo real
visualisation of kitchen/
dining space.

Above:
Planning proposal
drawings